



# LUXURY STAINLESS STEEL POOLS

**Mountfield**  
pool & garden

# STAINLESS STEEL POOLS

**Stainless steel pools combine luxury design, top quality and durability. The stainless steel pool can be placed outdoors or indoors and can be shipped in whole or in parts and the final connection made on site, allowing installation even in difficult to access terrain.**

Compared to other materials, stainless steel pools are long lasting, UV resistant, resistant to mechanical influences, dirt does not stick to them and pool chemicals do not destroy them. In addition, if a standardised pool is chosen, the price is equal to pools made of other materials. We use a stainless material, chrome-nickel stainless steel, which has unique mechanical properties and does not corrode in water.

You are always assured of a perfectly crafted design and the use of the best materials.

- The assembly of the stainless steel pool is carried out by workshop
- It is transported to its destination in one piece
- We also supply the pool tubs with a noped bottom
- 100% Czech product









# STAINLESS STEEL

## 1.4404

**Austenitic, weldable steel with very low carbon content, resistant to intergranular corrosion. Material tested under extreme conditions in the food and chemical industry.**

High quality and stable material for easy maintenance and maintaining high hygiene standards. Add an appealing look for the "eye" and a long service life and you have a surface that is perfect for home and public swimming pools.

- Sheet thickness 2mm wall, 1.5mm floor
- **ČSN** 17349
- **AISI** 316L
- **TIG/WIG** welded according to ČSN En287







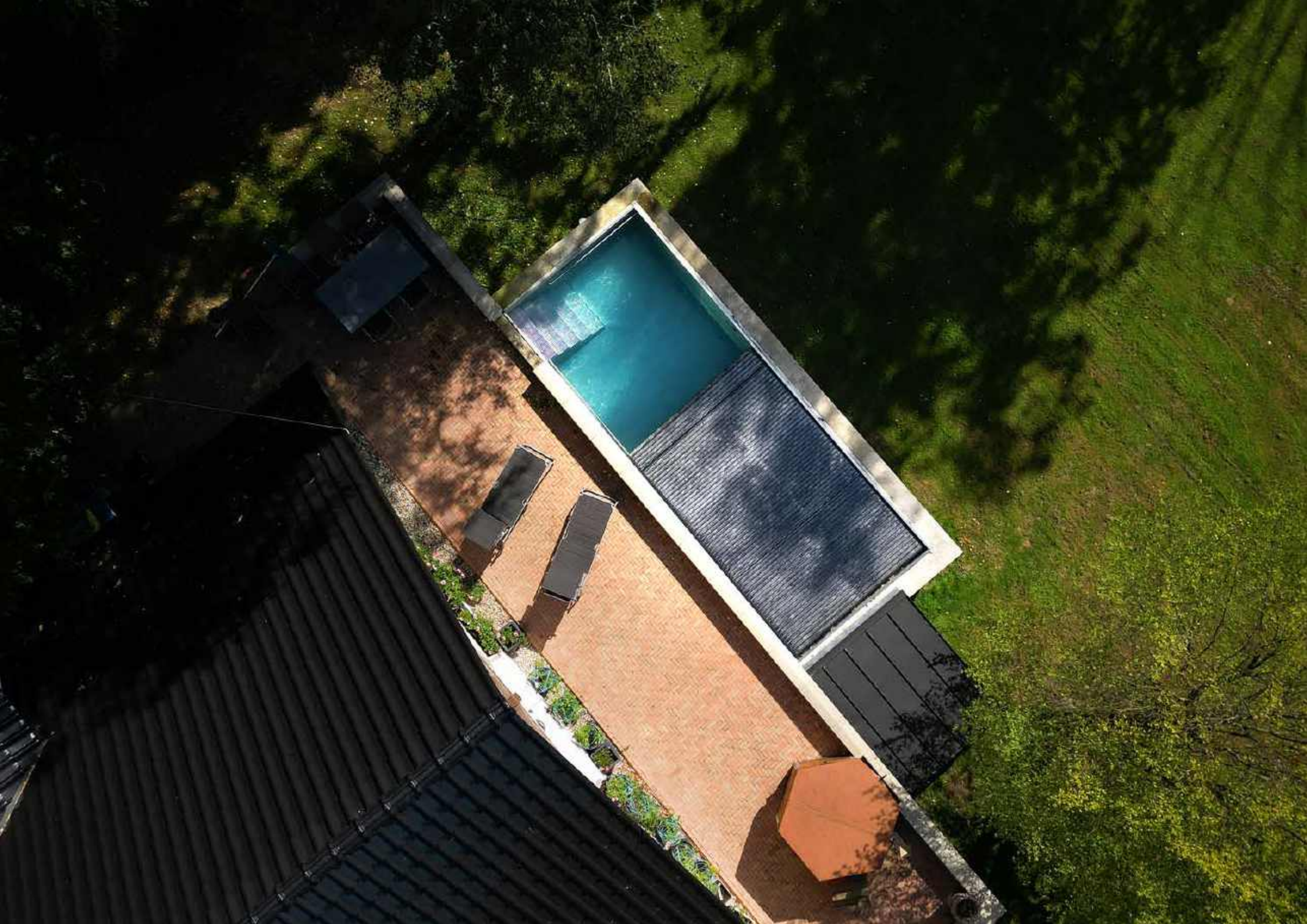
# PRODUCTION

The basis of production is the long tradition of Czech locksmith workshops. Stainless steel metal requires a special approach is necessary when storing the material, when it is necessary to ensure that it does not come into contact with other metals and thus damage the surface. All handling is therefore carried out according to standard working procedures developed by our company, which allows us to guarantee maximum quality and long-term sustainability of the material.

The most demanding part of the process is always the joining (welding) of stainless steel sheets and other components, which we carry out exclusively using the TIG method, which is suitable for creating high-quality welds characterized by high strength. The method is characterised by the use of tungsten electrodes and an inert argon atmosphere.











# SKIMMER POOLS

**Skimmer pools are designed in the so-called SLIM design, where the skimmer opening is significantly smaller and significantly higher than in other types of pools.**

This allows for a water surface height of approximately 40 mm below the top of the pool. The swimming area is thus fully utilised and the water depth of approx. 136 cm provides sufficient space for water frolicking.

The skimmer pool you get from us is equipped with luxurious 625 mm wide cantilevered steps with an elegant non-slip pattern (circular feet) that can also cover the entire bottom, a handy stainless steel handrail set along the length of the pool and a skimmer mechanism that can be cleaned from the pool area or accessed from the walkway behind the pool.

All of our pools are manufactured from high quality stainless steel and are tested in the extreme conditions of the food and chemical industries. The thickness of the sheet metal is 2 mm in the walls and 1.5 mm in the floors.











# POOL SIZES

## POOLS SKIMMER

dimension	depth
4,5 x 3 m	1,4 m
6 x 3 m	1,4 m
7 x 3 m	1,4 m
8 x 3 m	1,4 m

If these dimensions do not suit you and you are interested in other dimensions (e.g. 2x3 or 3x5), we will be happy to calculate a skimmer pool exactly according to your wishes.

If you are interested in an overflow pool, pool enclosure and extra accessories, please do not hesitate to contact us.









# LUXURY STAINLESS STEEL POOLS



European producer and seller of swimming  
pools, pool accessories, pool enclosures,  
garden equipments and e-bikes

**MOUNTFIELD, A.S.**

Všechromy 56/Highway D1, Exit 15  
251 63 Strančice, Czech republic

[www.mountfield-export.com](http://www.mountfield-export.com)  
[www.mountfield-pools.com](http://www.mountfield-pools.com)



b2b\_mountfield



Mountfield B2B



b2bmountfield1991